



[www.elpro.com](http://www.elpro.com)

The Datalogger Company

# ECOLOG-NET

the networkable datalogger



ELPRO-BUCHS AG  
CH-9471 Buchs SG  
Switzerland  
home: [www.elpro.com](http://www.elpro.com)



**ECOLOG-NET, the LAN / W-LAN network datalogger:**

ELPRO datalogger series Ecolog-Net are designed for recording temperature and relative humidity via a network. The data is stored in the internal memory and can be loaded to the PC via the LAN network. The system offers the very highest of data safety as the datalogger continues logging for months even in the event of a power failure running from its own internal lithium battery. Multiple level alarm features are built in for local or network alarming in for any user set out of range conditions.

**Primary applications:**

- Warehouses, general cold-storage
- Cold storage areas for pharmaceutical products
- Display cases and store rooms for food products
- Museums and galleries
- Technical processes
- Air-conditioned areas

**General technical data:**

- LAN / W-LAN with TCP/IP protocol
- USB connection for local communication
- 64,000 data memory with measured values
- External power supply for LAN network required
- Battery supply in case of power failure
- Programmable interval and alarm conditons
- All datalogger "function" and "save" memory mode



**Ecolog-Net LP4                      Part No. 2701**

- 4 - Channel datalogger with LAN interface and display
- Temperature range -200°C to +610°C
- 3-wire or 4-wire PT100 sensors (RTD)
- Suitable for cable lengths up to 70 meter (low electrical interference)
- Multifunction alarm output: LAN, LCD, buzzer, local connection
- Rugged, metallic case



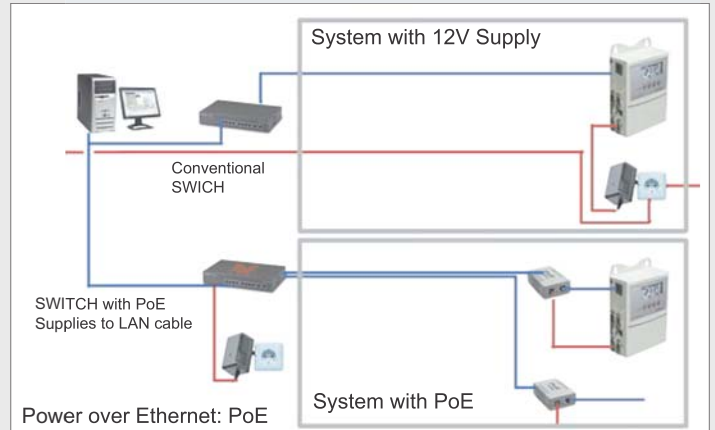
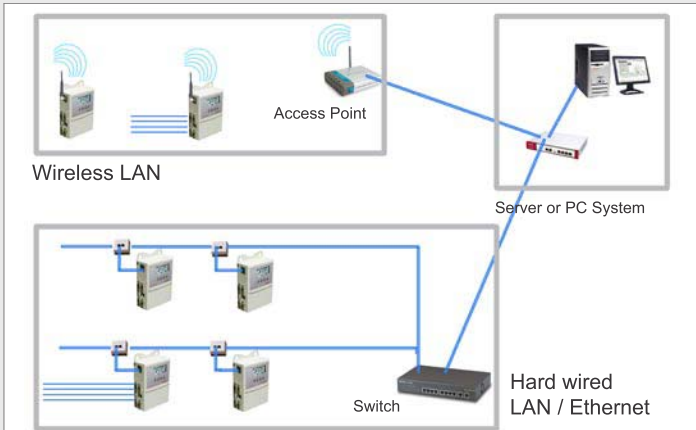
**Ecolog-Net LH1                      Part No. 2710**

- 4 - Channel datalogger with LAN interface and display
- Humidity and temperature recording
- 1x internal combined sensor
- 1x external combined sensor, cable lengths up to 20 meters
- Multifunction alarm output: LAN, LCD, buzzer, local connection
- Rugged, metallic case



**Ecolog-Net LH2                      Part No. 2705**

- 4 - Channel datalogger with LAN interface and display
- Humidity and temperature recording
- 2x external combined sensor, cable lengths up to 20 meters (total length)
- Multifunction alarm output: LAN, LCD, buzzer, local connection
- Rugged, metallic case



### W-LAN, wireless LAN network datalogger

All Ecolog-Net loggers are available as a W-LAN type. All functions are the same as with LAN type. Instead of a LAN connector, an antenna connector and an antenna is attached, external antennas may be connected.

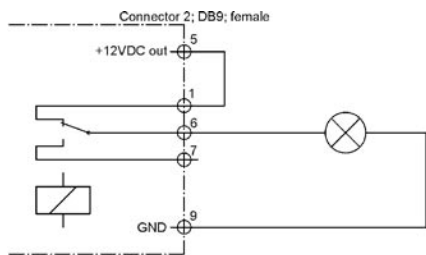
W-LAN standard: IEEE802.11b

- Ecolog-Net WP4
- Ecolog-Net WH1
- Ecolog-Net WH2

- Part No. 2703
- Part No. 2713
- Part No. 2707

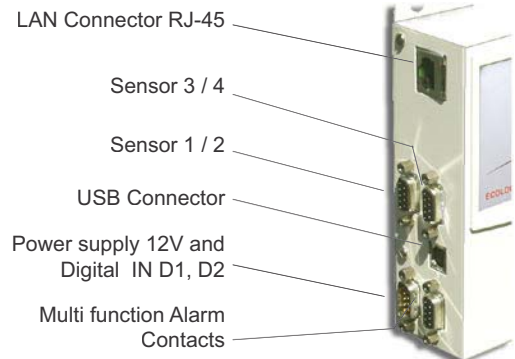
### Connectors / Alarms

Ecolog-Net offers a choice of communications: Besides the LAN, a USB connector is available for local downloading in case of power failure. Two digital inputs (D1 and D2) may also be registered.



Alarm with local power supply:  
1 of 5 possible alarm diagrams,  
alarm is on, if limit value is violated.

Further alarm possibilities over LAN  
with elproLOG-MONITOR software



### Some external sensors:

LPx: For all standard 3-wire or 4-wire PT100 (EN60751) or RTD 100 ohm sensors. The new compensation electronics allows cable length up to 70 meters:

- Part.No. 3163-L04: PT100, 4-wire CI. A temperature probe, -90°..+260°C
- Part.No. 3181-L05: PT100 4-wire CI. A ML-temperature probe, -200°..+220°C,
- Part.No. 3188-L0: PT100 4-wire CI. A ML-temperature probe, -90°..+350°C

LHx: Standard ELPRO humidity/temperature probe. Total cable length (L1+L2) is 20 meters:  
Part.No. 3087: Plug on sensor: humidity and temperature, range: T: -35°..+70°C, rH: 0%..100%  
Part.no. 3087-B extended temperature range: T: -35°..+110°C



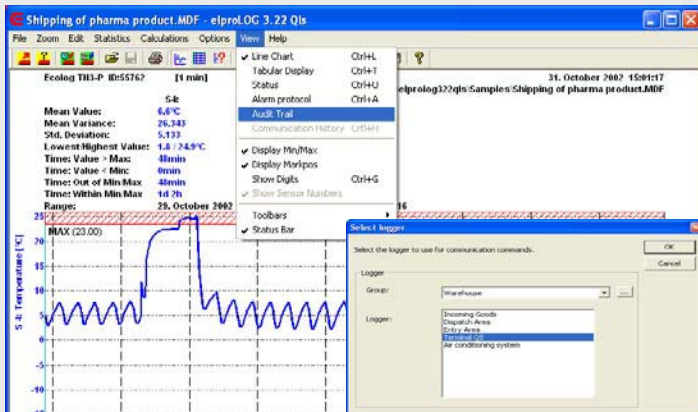
>>> see ELPRO sensor list for additional types and further details



The datalogger company

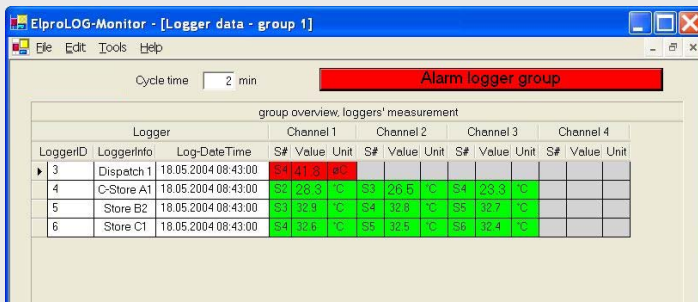
## elproLOG-Net, the software package for the network

Part. No. 2344 includes the following three software:



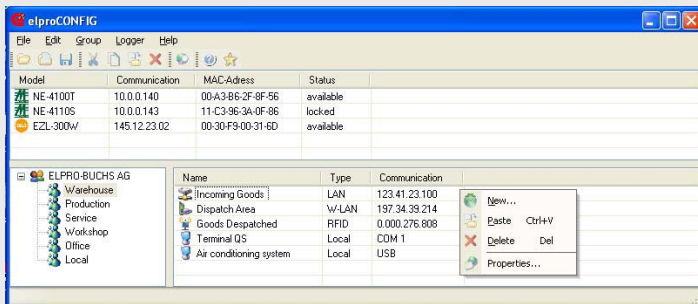
### elproLOG for Net, evaluation software basic functions:

- Network communication
- Programming for all ELPRO dataloggers
- Datalogger readout
- Printout of all screens and print preview
- Clearly laid out graphic representation
- Clearly laid out table formats
- Status printout with information about the datalogger
- Statistical data, histogram visuals
- Export of data and graphics
- Send E-mail: data file per E-mail to receiver



### elproLOG-Monitor software basic functions:

- Displays all dataloggers in one group
- Displays real time measured values
- Periodic alarm check of all dataloggers
- Common and individual alarm display



### elproLOG-Config software basic functions:

- Creation of different groups (locations)
- Configuration of each datalogger in the network
- Setup of IP addresses and clear text names
- Test of the connections to the logger
- Administration of passwords
- Tabular display of each datalogger in the network
- Printout of a overview of all loggers
- additionally included: Setup software - digiconnect

Contact us for further information on dataloggers, sensors, accessories and alarm devices.



Postbus 50, 2760 AB Zevenhuizen, Nederland  
 Tel: 0180 – 631344 Fax: 0180 - 632917  
 E-mail: [info@tqcinfo.nl](mailto:info@tqcinfo.nl) <http://www.tqcinfo.nl>

Elpro-Buchs AG, EN1001Ea, 07.2004